



PPS - PRINT SURF ROUGHNESS TESTER

For:

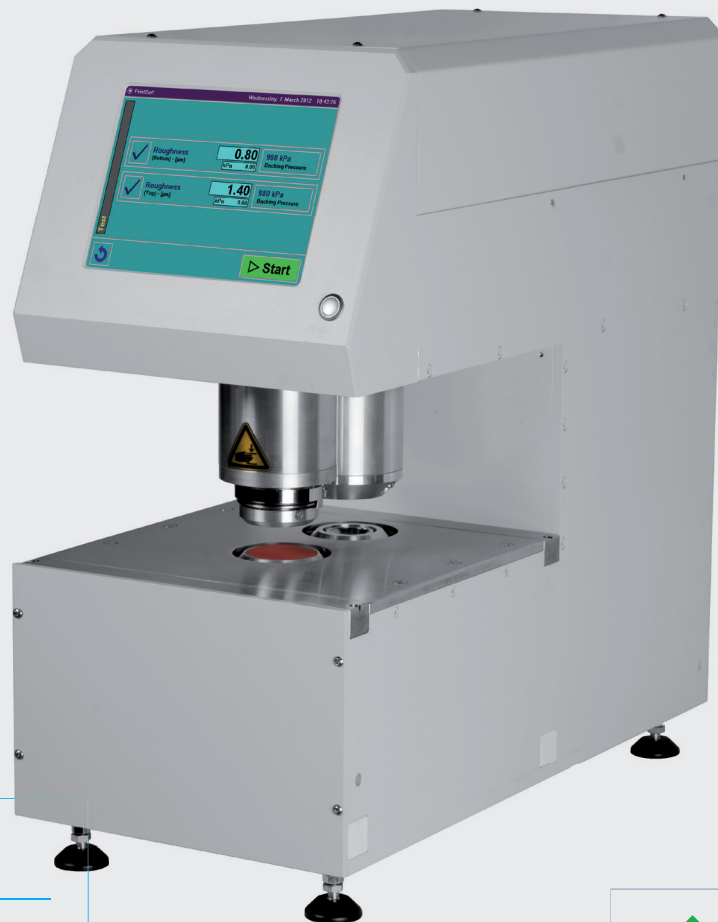


✓ PAPER



✓ BOARD

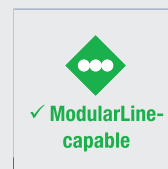
For determination of the roughness of paper according to the Print-surf method.



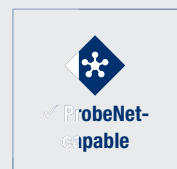
MODELS

AVAILABLE MEASURING DIRECTIONS

- Top side
- Bottom side
- Top and bottom side



✓ ModularLine-capable



✓ ProbeNet-capable

MOST IMPORTANT BENEFITS

- ✓ Easy operation via the inbuilt touch screen
- ✓ Special produced highly accurate measuring head
- ✓ Contact pressure adjustable
- ✓ High reproducibility

PRODUCT DESCRIPTION

The specially developed ModularLine housing, which comes as standard with user-friendly touch screen and the FRANK-PTI connection, offers an exceptional basis for the high-precision measurement technology of the PPS roughness tester. This consists, in essence, of a measurement cylinder with a precision measurement head below, the pressure regulation system and the measurement sensors. To prevent wear to the touch screen, the separate start button on the device can be used. The ModularLine PPS roughness tester can also be used as a separate laboratory device, as well as for profile testing as a module on the ModularLine.

TEST DESCRIPTION

The sample to be tested is placed in the measurement area. On pushing the start button, the measurement cylinder lowers and places the precision-manufactured measurement head on the material. The backing, located below, presses the sample with a predefined force of 980 or 1960 kPa against the blade of the measuring head. The pressure regulation system creates a difference in pressure of 19.6 kPa between the two ring channels. This determines the throughflow of air from one to the other ring channel, and the roughness is displayed on the touch screen in μm . For the measurement of compressibility, the compressive force of the backing against the measurement head can be reduced to 490 kPa.

TECHNICAL DATA

DEVICE/INSTRUMENT

- Easy operation via the integrated touch screen
- Measuring range: 0.5 – 8.0 μm
- Measuring pressure: 19.6 kPa
- Contact pressure adjustable: 490, 980 or 1,960 kPa
- Special sensor for measurements below the 1 μ limit
- High reproducibility
- FRANK-PTI standard-ports (see page 6)
- Compatible with ProbeNet (see pages 84 – 87)
- Useable as Modular-Line unit

INSTALLATION REQUIREMENTS

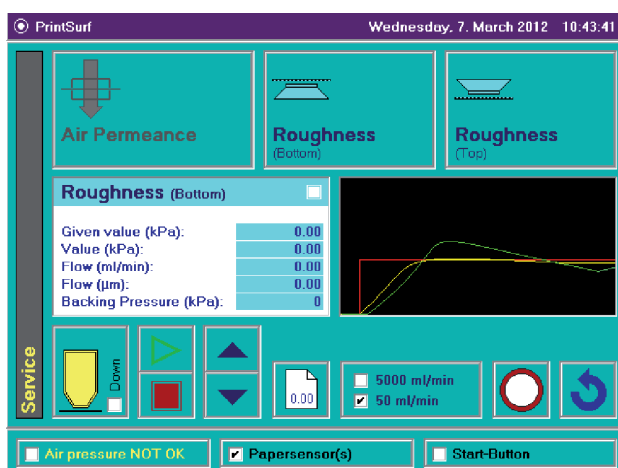
Electrical connection	110 – 230 V / 50 – 60 Hz
Water connection	No
Compressed air	6 bar

APPLICABLE STANDARDS

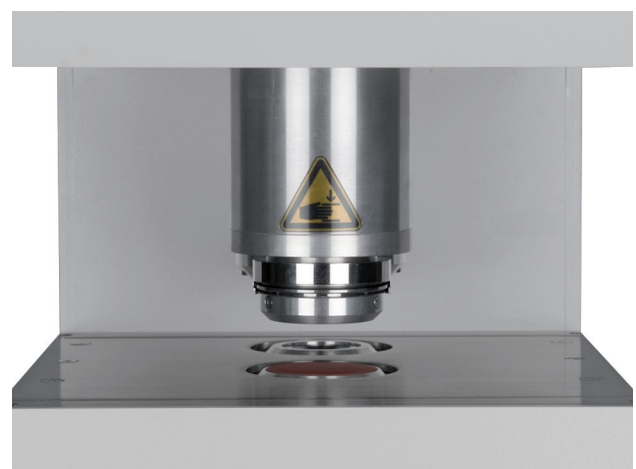
- DIN ISO 8791-4
- ISO 8791-1
- TAPPI T555



Precision-manufactured measurement head



Service menu for two heads with top and bottom side



Measuring cylinder with PPS head