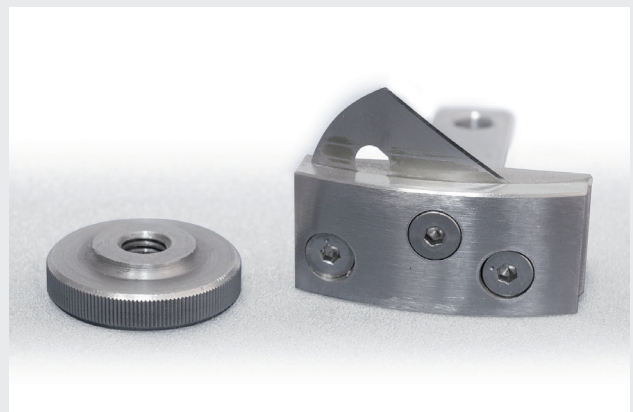


# FCT ROUND SAMPLE CUTTER



Easy changeable blade



## PRODUCT DESCRIPTION

The round sample cutter has been specially developed for FCT tests in the crush tester and is used for creating samples with a surface area of exactly 100 cm<sup>2</sup>. It consists of a threaded handle, a mechanism to preset the cut depth, and the blade, which can be easily exchanged. To prevent the blade slipping on the corrugated board, there are four pointed nails on the underside. The material to be cut is placed on the included cutting pad, and the circular sample cutter is placed on top. Turning the handle produces a slow and precise cut through the corrugated board, to ensure that the cut edges remain undamaged. The sample created with the circular sample cutter can also be used to determine the grammage.

## TECHNICAL DATA

### DEVICE/INSTRUMENT

- Crank thread
- Screw for presetting the cutting depth
- Four needels avoid slipping off
- Easy changeable blade
- Included into delivery:  
Cutting pad

## FLAT CRUSH TEST (FCT)

To determine the flat crush resistance.

The exactly 100 cm<sup>2</sup> sample prepared with the circular sample cutter is placed between the platens in the flat crush tester.

In the FCT test, the surface of the corrugated paper is pressed until the flutes buckle. The force measured indicates up to which point the fibres recover or when they can no longer return to their original shape (meander point) and how much force is required to finally break them.



Flat Crush Test (FCT)